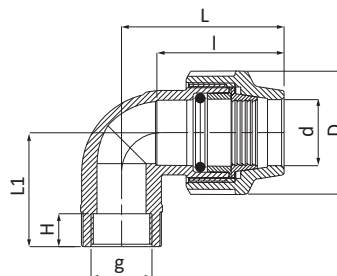


## CODE 1009

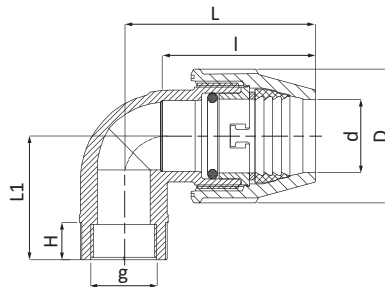


Gomito a 90° con derivazione femmina - 90° Elbow with threaded female take off - Coude à 90° avec dérivation femelle  
 Codo 90° con salida rosca hembra - Winkel 90° mit Innengewinde - Колено 90° с внутренней резьбой



CODE	DIM dxg [mmxin.]	D [mm]	I [mm]	H [mm]	L [mm]	L1 [mm]	PN [bar]	PACK [UMV]		€/pz
								RIF. 2	RIF. 5	
1009016002001	16x1/2"	42	39	18	58	48	16	100	-	3,30
1009016003001	16x3/4"	42	39	18	58	48	16	100	-	3,30
1009020002001	20x1/2"	46	45	18	63	39	16	80	350	4,08
1009020003001	20x3/4"	46	45	18	66	40	16	80	330	4,08
1009025002001	25x1/2"	55	53	18	77	45	16	50	210	5,13
1009025003001	25x3/4"	55	53	18	77	45	16	50	210	5,13
1009025004001	25x1"	55	53	20	77	48	16	50	200	5,13
1009032002001	32x1/2"	63	57	17	86	48	16	30	130	6,00
1009032003001	32x3/4"	63	57	18	86	49	16	30	130	6,00
1009032004001	32x1"	63	57	21	86	51	16	30	130	6,00
1009032005001	*32x1"1/4	63	57	26	86	60	16	25	110	8,68
1009040003001	40x3/4"	80	70	18	105	55	16	15	70	11,83
1009040004001	40x1"	80	70	21	105	59	16	15	70	11,83
1009040005001	*40x1"1/4	80	70	25	105	64	16	15	60	11,83
1009040006001	*40x1"1/2	80	70	25	105	66	16	15	60	11,83

>>>



>>>

CODE	DIM dxg [mmxin.]	D [mm]	I [mm]	H [mm]	L [mm]	L1 [mm]	PN [bar]	PACK [UMV]		€/pz
								RIF. 2	RIF. 5	
1009051005001	*50x1"1/4	96	107	24	145	85	16	-	29	15,80
1009051006001	*50x1"1/2	96	107	25	145	90	16	-	29	15,80
1009051007001	*50x2"	96	107	25	145	90	16	-	29	15,80
1009064006001	*63x1"1/2	115	130	26	173	101	16	-	17	21,52
1009064007001	*63x2"	115	130	35	173	108	16	-	17	21,52
1009064008001	*63x2"1/2	115	130	35	173	108	16	-	17	21,52
1009076007001	*75x2"	129	142	36	193	123	16	-	11	37,18
1009076008001	*75x2"1/2	129	142	37	193	125	16	-	10	37,18
1009076009001	*75x3"	129	142	38	193	129	16	-	10	37,18
1009091009001	*90x3"	155	157	40	216	140	16	-	6	71,15
1009091010001	*90x4"	155	157	40	216	142	16	-	6	71,15
1009111009001	*110x3"	183	222	40	294	134	16	-	4	117,14
1009111010001	*110x4"	183	222	40	294	138	16	-	4	117,14

\* La bocca filettata è rinforzata da un anello di acciaio inox - \* The threaded end is reinforced with a stainless steel ring

\* La bouche filetée est renforcée par une bague en acier inox - \* La boca filetiada está reforzada por un anillo de acero inox

\* Die Gewindeöffnung ist mit einem Ring aus rostfreiem Stahl verstärkt - \* Конец резьбы усилен кольцом из нержавеющей стали