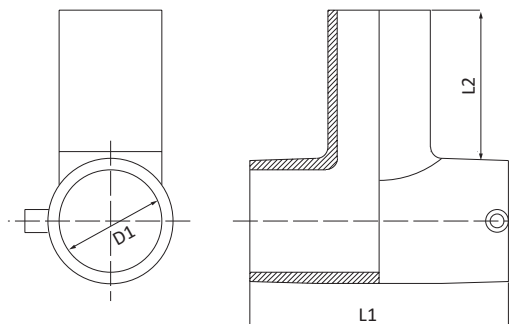


## CODE 3003



Ti intermedio - Equal tee - Té intermédiaire - Te igual - T-Stück egal - Тройник  
PE100 - S5 Gas - PN 16 20°C



PE100 - SDR11 - S5

ACQUA: PFA (PN)=16 bar 20°C

GAS: MOP=10 bar; In Italia MOP=5 bar (D.M. 24/11/84, D.M. 16/4/2008 e successive modifiche)

Per il tempo di saldatura da utilizzare con tubo SDR26 contattare direttamente Unidelta.

PE100 - SDR11 - S5

WATER: PFA (PN)=16 bar 20°C

GAS: MOP=10 bar; in Italy MOP=5 bar (D.M. 24/11/84, D.M. 16/4/2008 and further modification)

Contact Unidelta directly for the welding time to be used with SDR26 pipe.

CODE	DIM dxdxd [mm]	L [mm]	L1 [mm]	W-SDR	PACK [UMV]				Sfusi Loose	€/pz
					RIF. 10	RIF. 11	RIF. 12	RIF. 2		
3003021000001	20x20x20	87	56	≤ 11	-	25	-	-	-	24,64
3003026000001	25x25x25	96	56	≤ 11	-	20	-	-	-	24,64
3003033000001	32x32x32	104	60	≤ 11	-	12	-	-	-	26,46
3003041000001	40x40x40	115	62	≤ 17	-	8	-	-	-	37,97
3003051000001	50x50x50	131	69	≤ 17	-	-	-	12	-	39,08
3003064000001	63x63x63	150	79	≤ 17	-	-	-	8	-	41,90
3003076000001	75x75x75	174	88	≤ 17	16	-	-	-	-	62,24
3003091000001	90x90x90	201	100	≤ 17	10	-	-	-	-	72,29
3003111000001	110x110x110	237	106	≤ 17	6	-	-	-	-	103,49
3003125000001	125x125x125	248	102	≤ 17	-	-	-	-	1	138,75
3003140000001	140x140x140*	307	154	≤ 17	-	-	-	-	1	193,21
3003160000001	160x160x160	340	117	≤ 17	-	-	-	-	1	225,37
3003180000001	180x180x180	360	149	≤ 17	-	-	-	-	1	340,26
3003200000001	200x200x200	358	131	≤ 17	-	-	-	-	1	805,60
3003225000001	225x225x225	406	146	≤ 17	-	-	-	-	1	899,41
3003250000001	250x250x250	448	151	≤ 17	-	-	-	-	1	1.069,96

\* Disponibile solo a spira scoperta - \* Available only with uncovered coil - \* Disponible seulement avec spirale découverte

\* Disponible sólo con resistencia no cubierta - \* Nur mit entdeckten Windung verfügbar - \* Доступно только с открытой спиралью